

# Tilt & Lift 25 RTS

- FR** Notice
- EN** Instructions
- IT** Manuale
- ES** Instrucciones
- PT** Instruções
- EL** Οδηγίες χρήσης

# ORIGINAL INSTRUCTIONS

These instructions apply to all Tilt & Lift 25 RTS drive, the different versions of which are available in the current catalogue.

## CONTENTS

---

<b>1. Prior information</b>	<b>16</b>	<b>3. Use and maintenance</b>	<b>23</b>
1.1. Sphere of application	16	3.1. Mode selection: roller or tilting mode	23
1.2. Liability	16	3.2. Up, down, my: in roller mode	23
<b>2. Installation</b>	<b>17</b>	3.3. Up, down, my: in tilting mode	24
2.1. Assembly	17	3.4. Additional settings	24
2.2. Wiring	18	3.5. Tips and advice on operation	26
2.3. Commissioning	18		
2.4. Tips and advice on installation	20	<b>4. Technical data</b>	<b>27</b>

## GENERAL INFORMATION

---

### Safety instructions



#### **Danger**

*Indicates a danger which may result in immediate death or serious injury.*



#### **Warning**

*Indicates a danger which may result in death or serious injury.*



#### **Precaution**

*Indicates a danger which may result in minor or moderate injury.*



#### **Attention**

*Indicates a danger which may result in damage to or destruction of the product.*

# 1. PRIOR INFORMATION

---

## 1.1. SPHERE OF APPLICATION

Tilt&lift are designed to drive most types of interior roman blinds, venetian blinds, pleated blinds and cellular blinds.

The installer, a home motorisation or home automation professional, must ensure that once the driven product is installed, it respects the current standards in the country of installation, notably standard EN 13120 relative to interior blinds.

## 1.2. LIABILITY

Before installing and using the drive, please read these instructions carefully. In addition to the instructions provided in this guide, please also comply with the instructions set out in the enclosed **Safety instructions** document.

The drive must be installed by a home motorisation and automation professional, in accordance with Somfy's instructions and the applicable regulations in the country of installation.

Any operation of the drive outside the sphere of application described above is prohibited. Such operation shall exclude Somfy from all liability and invalidate the Somfy warranty, as will any failure to comply with the instructions given herein and in the enclosed **Safety instructions** document.

After installing the drive, the installer must inform his customers of the operating and maintenance conditions for the drive and must pass the operating and maintenance instructions on to them, as well as the enclosed **Safety instructions** document. Any After-Sales Service operation on the drive requires intervention by a home motorisation and automation professional.

Should any doubt arise during installation of the drive or for additional information, consult a Somfy contact or visit [www.somfy.com](http://www.somfy.com).

## 2. INSTALLATION

### Attention

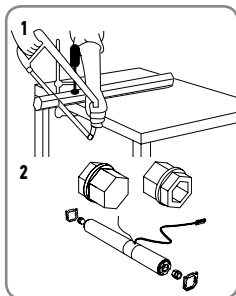


- These instructions are **mandatory** for motorisation and automation professional installing the drive.
- Never drop, knock, drill or submerge the motor.
- Install an individual control point for each motor.

### 2.1. ASSEMBLY

#### 2.1.1. Drive preparation

- 1) Cut the shaft to the length required.
- 2) Position the headrail and shaft adapters on the motor



#### 2.1.2. Motor integration inside the headrail

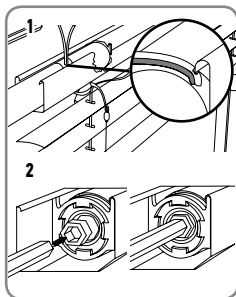
- 1) Insert the motor in the headrail.



### Attention

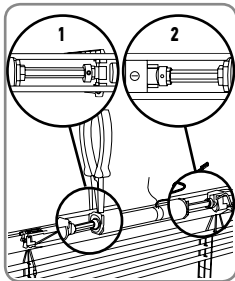
Take care not to cut the power supply wires on the edges of the headrail when introducing the motor.

- 2) Let the shaft abut against the motor shaft adapters.
- ⓘ For optimal radio reception, the antenna should be kept straight and outside the headrail.



### 2.1.3. Motor and shaft locking

- 1) Using the relevant tool, pinch headrail edges to block motor translation.
- 2) To lock the shaft, place stop rings against the CTS, and screw them.



## 2.2. WIRING

### **Danger**



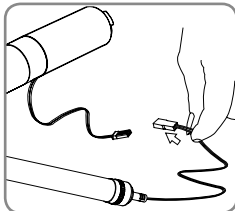
- Cables which pass through a metal wall must be protected and isolated using a sheath or sleeve.
- Attach cables to prevent any contact with moving parts.
- Drive cable cannot be removed. If it is damaged, return the drive to the After-Sales department.
- To ensure electrical safety, this Class III motor must be powered by a «SELV» voltage source (Safety Extra Low Voltage).

### **Attention**



- Leave the motor power supply cable accessible: it must be possible to replace it easily.
- Do not unplug the battery or the power supply when the motor is working.

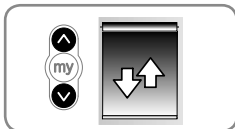
Plug the battery or the power supply with the motor supply cable.



## 2.3. COMMISSIONING

### 2.3.1. Programming the RTS control point

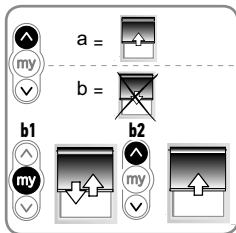
Press the **Up** and **Down** buttons simultaneously on the RTS control point: the motorised product moves up and down and the control point is preprogrammed in the motor



## 2.3.2. Checking the direction of rotation

Press the **Up** button on the RTS control point:

- If the motorised product rises (a), the direction of rotation is correct: Move onto the section **2.3.3. Setting the end limits.**
- If the motorised product lowers (b), the direction of rotation is incorrect: Move onto the next step.
  - b1) Press the **my** button on the RTS control point until the motorised product moves up and down: The direction of rotation has been modified.
  - b2) Press the **Up** button on the RTS control point to check the direction of rotation.



## 2.3.3. Setting the end limits

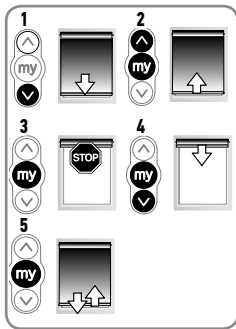
**i** The end limits can be set in any order.

### Attention



Do not set the upper end limit in a position in which the fabric or slats are fully pressed against the headrail, as this could damage the motorised product and/or the motor in the long term.

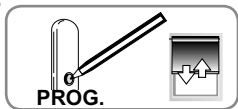
- Bring the motorised product to the down desired position by pressing the **Down** button.
- Press the **my** and **Up** buttons at the same time until the motorised product moves. The lower end limit is memorised.
- Press the **my** button when the motorised product reaches the desired upper position. If necessary, adjust the position of the motorised product using the **Up** and **Down** buttons.
- Press the **my** and **Down** buttons at the same time until the motorised product moves. The upper end limit is memorised. The motorised product goes down and stops at the lower end limit.
- To confirm the end limits, press the **my** button until the motorised product moves up and down. The end limits are programmed.



### 2.3.4. Recording the RTS control point

The motorisation is in programming mode:

Quickly press the **PROG** button on the RTS control point to be programmed:



The motorised product moves up and down: this RTS control point is programmed in the motorisation.

① *If the motorisation is no longer in programming mode, repeat Step 2.3.1. Programming the RTS control point then perform Step 2.3.4. Recording the RTS control point.*

## 2.4. TIPS AND ADVICE ON INSTALLATION

### 2.4.1. Questions about the drive?

Observations	Possible causes	Solutions
The motorised product does not operate.	There may be some radio interferences.	Unplug the motor supply cable and reconnect the battery to the motor.
	One or more batteries have been mounted backwards.	Verify that batteries are all mounted in the correct manner.
	One or more batteries leak in the battery tube.	Replace the batteries.
	Batteries (inside battery tube) are weak.	Check whether the batteries are weak and replace if necessary.
	The control point battery is weak.	Check whether the battery is weak and replace it if necessary.
	The control point is not compatible.	Check for compatibility and replace the control point if necessary.
	The control point used has not been programmed into the motor.	Use a programmed control point or program this control point.

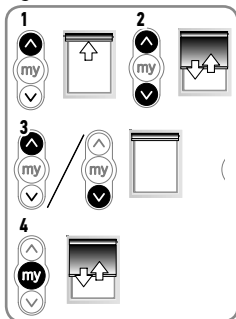
## Attention

To press on the motor **PROG** button, it's best to use the motor antenna. The use of other tools could damage the **PROG** button.

### 2.4.2. Re-setting the end limits

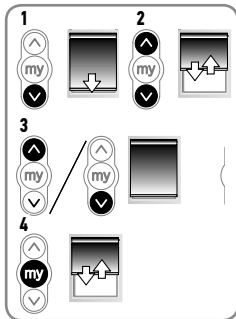
#### 2.4.2.1. Readjusting the upper end limit

- 1) Press the **Up** button to bring the motorised product to the end limit to be readjusted.
- 2) Press the **Up** and **Down** buttons at the same time until the motorised product moves up and down.
- 3) Press the **Up** or **Down** button to move the motorised product to the new desired position.
- 4) To confirm the new end limit, press the **my** button until the motorised product moves up and down.



#### 2.4.2.2. Readjusting the lower end limit

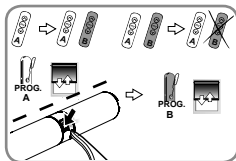
- 1) Press the **Down** button to bring the motorised product to the end limit to be readjusted.
- 2) Press the **Up** and **Down** buttons at the same time until the motorised product moves up and down.
- 3) Press the **Up** or **Down** button to move the motorised product to the new desired position.
- 4) To confirm the new end limit, press the **my** button until the motorised product moves up and down.



### 2.4.3. Adding or deleting a RTS control point

Find an RTS control point (A) programmed in the motor.

Press and hold the RTS programmed control point (A) **PROG** button or the motor **PROG** button until the motorised product moves up and down: the motor is in programming mode.



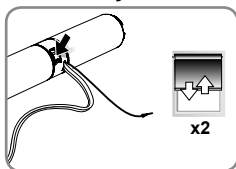
Quickly press the RTS control point(B) **PROG** button to add or delete: the motorised product moves up and down and the RTS control point is programmed or deleted from the motor.



#### 2.4.4. Erasing the control point from the memory of the motor

To delete all the programmed control points, press and hold the motor **PROG** button until the motorised product moves up and down twice.

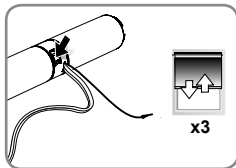
All the control points are deleted.



#### 2.4.5. Erasing the memory of the motor

To reset the motor, press and hold the **PROG** button on the motor head until the motorised product moves up and down 3 times.

All the settings are erased.



## 3. USE AND MAINTENANCE

① *This motor is maintenance-free*

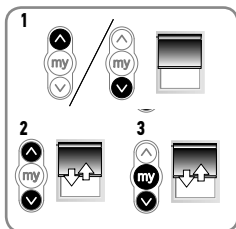
### 3.1. MODE SELECTION: ROLLER OR TILTING MODE

① *The mode selection is only possible if step 2.3.4. Recording the RTS control point has already been completed.*

The Drive is designed to work with 2 modes: Tilting mode or Roller mode.

This feature allows the drive to be set according to the type of blind you are working with. The drive is set by default to work in Tilting mode.

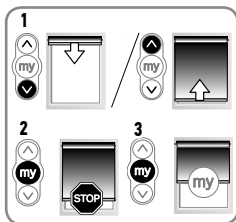
- 1) Move the motorised product away from the end limits.
- 2) Simultaneously press the **Up** and **Down** buttons until the motorised product moves up and down.
- 3) Press and hold the **my** and **Down** buttons simultaneously until the motorised product moves up and down to change from Roller mode to Tilting mode.



To return to previous mode, repeat step 1.

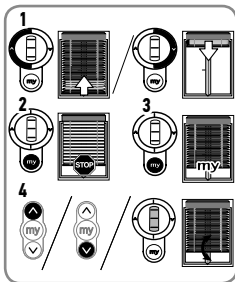
### 3.2. UP, DOWN, MY: IN ROLLER MODE

- 1) To move the motorised product from a limit to the other limit, press briefly the **Up** or **Down** button.
- 2) To stop the motorised product, press the **my** button.
- 3) If a my position is recorded, To move the motorised product to this my position, press briefly the **my** button.



### 3.3. UP, DOWN, MY: IN TILTING MODE

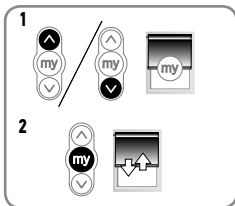
- 1) To move the motorised product from a limit to the other limit, briefly press (less than 0,5s) the **Up** or **Down** button.
- 2) To stop the motorised product, press the **my** button.
- 3) If a my position is recorded, To move the motorised product to this my position, press briefly the **my** button. The motorised product first goes to the down end limit, then to the my position.
- 4) To tilt the slats, press and hold the **Up** or **Down** button or use the scroll of the remote control, until the slats reach the desired position.



### 3.4. ADDITIONAL SETTINGS

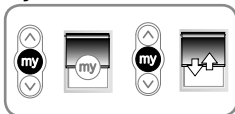
#### 3.4.1. Record or Modify the favourite position (my)

- 1) Place the motorised product in the desired favourite position (my).
  - 2) Press the **my** button until the motorised product moves up and down: the desired favourite position (my) has been programmed.
- i** *In tilting mode (the default mode), if you want to save a favorite slat position, turn the motorised product necessarily in the down end limit, then set the desired position by pressing the **Up** button.*



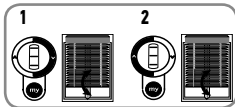
#### 3.4.2. Deleting the favourite position (my)

To delete the my position, press the **my** button to move to this position and press the **my** button until the motorised product moves up and down.



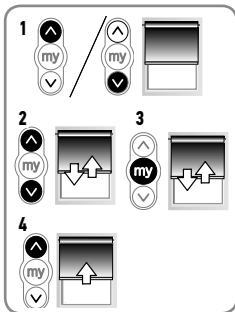
### 3.4.3. Adjusting the tilting speed

- 1) To decrease the tilting speed, press and hold the **my** and **Down** buttons simultaneously until the motorised product moves up and down. Repeat as needed. If the motorised product does not move up and down, then the minimum setting has been reached.
- 2) To increase the tilting speed, press and hold the **my** and **Up** buttons simultaneously until the motorised product moves up and down. Repeat as needed. If the motorised product does not move up and down, then the maximum setting has been reached.



### 3.4.4. Modifying the motor rotation direction

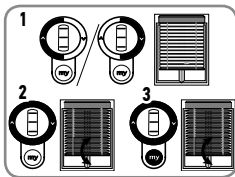
- 1) Move the motorised product away from the end limits.
- 2) Press the **Up** and **Down** buttons simultaneously until the motorised product moves up and down.
- 3) Press the **my** button until the motorised product moves up and down to reverse the rotation direction.
- 4) Press the **Up** button to check the new rotation direction.



The motor rotation direction is reversed.

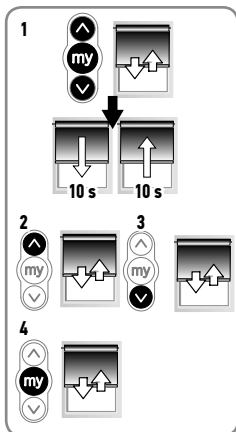
### 3.4.5. Modifying the wheel rotation direction

- 1) Move the motorised product away from the end limits.
- 2) Press the **Up** and **Down** buttons simultaneously, until the motorised product moves up and down.
- 3) Press the **Up**, **my** and **Down** buttons simultaneously, until the motorised product moves up and down, to reverse the wheel rotation direction.



### 3.4.6. Adjusting the speed

- 1) Move the driven product away from the end limits. Press and hold the UP, MY and DOWN buttons simultaneously, until the driven product briefly moves Up and Down once. The driven product will move UP and Down automatically in 10 second cycles to validate entering in speed adjustment mode.
- 2) To increase the speed, press and hold the UP button until the driven product briefly moves up and down. Repeat as needed.
- ① *Maximum speed is reached when the driven product moves briefly 3 times in one direction and 3 times in the other direction.*
- 3) To decrease the speed, press and hold the DOWN button until the driven product briefly moves up and down. Repeat as needed.
- ① *Minimum speed is reached when the driven product moves briefly 3 times in one direction and 3 times in the other direction.*
- 4) To confirm the new speed, press and hold the MY button until the driven product briefly moves Up and Down.



## 3.5. TIPS AND ADVICE ON OPERATION

Questions about the Drive?

Observations	Possible causes	Solutions
The motorised product does not operate.	One or more batteries have been mounted backwards.	Verify that batteries are all mounted in the correct manner.
	One or more batteries leak in the battery tube.	Replace the batteries.
	Batteries (inside battery tube) are weak.	Check whether the batteries are weak and replace if necessary.
	The control point battery is weak.	Check whether the battery is weak and replace it if necessary.

- ① *If the motorised product still does not work, contact a motorisation and home automation professional.*

## 4. TECHNICAL DATA

Power supply	12 Vdc SELV
Frequency bands and maximum power used	433,42 MHz
Torque	0,8 Nm
Speed	30 rpm
Safety level	III
Minimum distance between two end-limit	1/8 turn
Maximum distance between two end-limit	100 turns
Maximum running time	6 minutes
Operating temperature	0°C to + 60°C
Protection rating	IP 20 (For indoor use only)
Maximum number of associated control	12

① *For additional information on the technical data for this drive contact your Somfy representative.*

**C E** SOMFY ACTIVITES SA, F-74300 CLUSES as manufacturer hereby declares that the drive covered by these instructions and used as intended according to these instructions is in compliance with the essential requirements of the applicable

European Directives and in particular of the Machinery Directive 2006/42/EC, and the Radio Directive 2014/53/EU.

The full text of the EU declaration of conformity is available at [www.somfy.com/ce](http://www.somfy.com/ce).

Antoine Crézé, Approval manager, acting on behalf of Activity director, Cluses, 06/2018.



Please separate storage cells and batteries from other types of waste and recycle them via your local collection facility.



We care about our environment. Do not dispose of the appliance with usual household waste. Give it to an approved collection point for recycling.

**SOMFY ACTIVITES SA**

50 avenue du Nouveau Monde  
F-74300 Cluses

**[www.somfy.com](http://www.somfy.com)**

**somfy®**

**5142899A**

